



# WISE-5231M-4GE/WISE-5231M-4GC Quick Start

v1.1, May 2018

## Technical Support

**WISE-5231M-4GE / WISE-5231M-4GC User Manual:**

<http://wise.icpdas.com/Download.html>

[ftp://ftp.icpdas.com/pub/cd/wise\\_cd/](ftp://ftp.icpdas.com/pub/cd/wise_cd/)

**WISE-5231M-4GE / WISE-5231M-4GC Website:**

<http://wise.icpdas.com>

## What's In the Box?

In addition to this document, the package includes the following items:



WISE-5231M-4GE  
WISE-5231M-4GC



GSM Antenna  
(ANT-421-04)



microSD card and  
micro SD/SD  
adapter



Screw Driver  
2.4mm (1C016)



44 mm DIN-Rail  
Clip



M3x6L Screw \* 4



Pin Terminal \* 16

# 1

## Configuring the boot mode

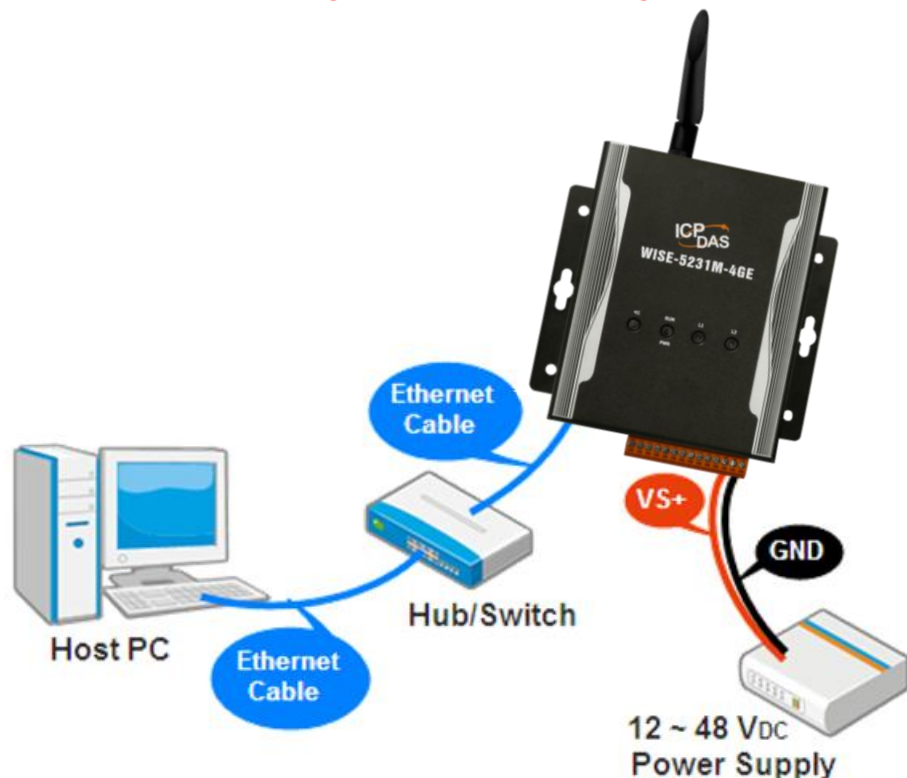
Before starting WISE-5231M-4GE/4GC at the first time, be sure that the switch is placed in the "0" position.



# 2

## Connect to PC, Network and Power

The WISE-5231M-4GE/4GC is equipped with an RJ-45 Ethernet port for connection to an Ethernet hub/switch and PC. You can also link directly the WISE-5231M-4GE/4GC to PC with an Ethernet cable. **After power is connected, please wait one minute for WISE-5231M-4GE/4GC start-up procedure. When the "RUN/PWR" light starts flashing, it represents the boot is complete.**



# 3

## Using Browser to Assign a New IP

The WISE-5231M-4GE/4GC is an Ethernet controller, which comes with a default IP setting; therefore, you must first assign a new IP setting to the LAN1 port of WISE-5231M-4GE/4GC. The factory default IP settings of WISE-5231M-4GE/4GC are as follows:

Item	Default
IP Address	192.168.255.1
Subnet Mask	255.255.0.0
Gateway	192.168.0.1
DNS Server	8.8.8.8(Default: Google DNS Server)

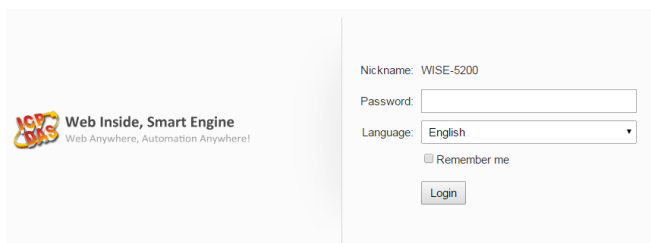
Follow the following steps for WISE-5231M-4GE/4GC new IP setting:

Step1: Change the PC's IP setting same as WISE-5231M-4GE/4GC's IP domain. For example, set PC's IP as 192.168.255.10.

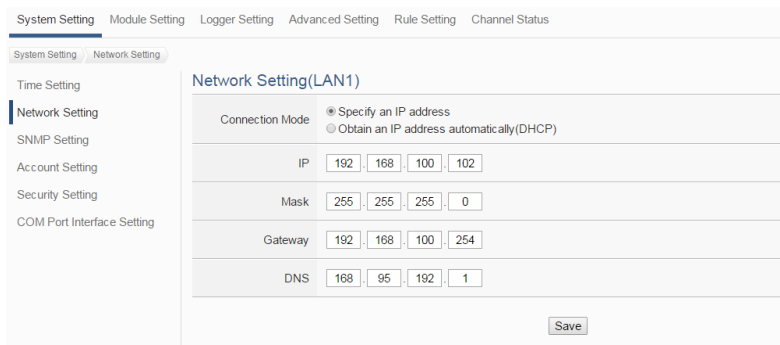
Step2: Make sure the PC and WISE-5231M-4GE/4GC is connecting through Ethernet.

Step3: Open a PC side browser, and type in the URL address (http://192.168.255.1) of the WISE-5231M-4GE/4GC to connect the Web Server in WISE-5231M-4GE/4GC.

Step4: Use default Administrator password "Admin" to login the system.



Step5: Please follow the sequence【 System Setting 】→【 Network Setting 】→ 【 Network Setting(LAN1) 】 to change the IP setting of WISE-5231M-4GE/4GC.



Step6: After complete the IP setting, please save it, and then the new IP setting will take effect.

# 4

## Go to WISE-5231M-4GE/4GC Web Site to edit Control Logic

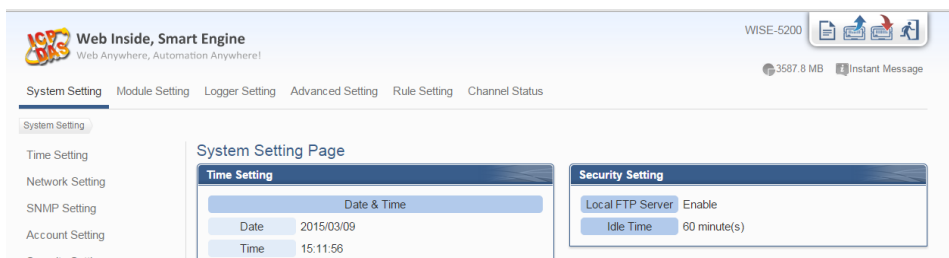
Please follow the steps below to implement IF-THEN-ELSE control logic on ICP DAS WISE-5231M-4GE/4GC controllers:

### Step1: Open a browser, and type in the URL address of the WISE-5231M-4GE/4GC

Open a browser and type in the URL address(The new IP setting) of the WISE-5231M-4GE/4GC in the address bar. Make sure the IP address is accurate.

### Step2: Get on the WISE-5231M-4GE/4GC web site

Get on the WISE-5231M-4GE/4GC web site. Login with the default password “Admin”. Implement the control logic configuration in the order: 【Module Setting】 → 【Advanced Setting】 → 【Rule Setting】 → 【Save】 , then complete the IF-THEN-ELSE rule editing.



### Step3: For more detail information, please refer to WISE-5231M-4GE/4GC User Manual



# WISE-5231M-4GE/WISE-5231M-4GC 快速上手指南

v1.1, May 2018

## 技術支援

**WISE-5231M-4GE / WISE-5231M-4GC 使用手冊：**

<http://wise.icpdas.com/Download.html>

[ftp://ftp.icpdas.com/pub/cd/wise\\_cd/](ftp://ftp.icpdas.com/pub/cd/wise_cd/)

**WISE-5231M-4GE / WISE-5231M-4GC 產品網頁：**

<http://wise.icpdas.com>

## 產品內容

除了本『快速上手指南』外，此產品內容還包括以下配件：



WISE-5231M-4GE  
WISE-5231M-4GC



GSM 外接天線  
(ANT-421-04)



microSD 卡及  
micro SD/SD 轉接卡



螺絲起子 2.4mm  
(1C016)



44 mm DIN-Rail  
導軌固定架



M3x6L 螺絲 \* 4



歐式壓著端子 \* 16

# 1 檢視啟動模式

在第一次啟動 WISE-5231M-4GE/4GC 前，請先確認旋轉式開關的位置在“0”。



# 2 連接 PC 主機、網路及電源

WISE-5231M-4GE/4GC 配有標準的網路接口 RJ-45，可透過網路集線器/交換器與 PC 連接，也可直接連到 PC 的網路接口。接上電源後，

WISE-5231M-4GE/4GC 開機程序須等待約一分鐘，待"RUN/PWR"燈開始閃爍則代表開機完成，可進行連線與設定。



# 3

## 設定 WISE-5231M-4GE/4GC 的 IP 位址

WISE-5231M-4GE/4GC 在出廠時會統一預設網路設定值，使用者可以依照下列步驟自行變更網路設定。網路出廠預設值為：

項目	預設值
IP 位址	192.168.255.1
子網路遮罩 (Subnet Mask)	255.255.0.0
通訊閘道 (Gateway)	192.168.0.1
DNS Server	8.8.8.8(預設為 Google DNS Server)

步驟 1：將 PC 的網路設定更改為與 WISE-5231M-4GE/4GC 相同網路區段。例如 IP：192.168.255.10

步驟 2：確認 WISE-5231M-4GE/4GC 與 PC 已透過網路正確連接。

步驟 3：開啟 PC 端的瀏覽器並於網址列輸入 <http://192.168.255.1>。

步驟 4：輸入管理者預設密碼“Admin”進行登入。



步驟 5：登入成功後至【系統參數設定】→【網路設定】→【網路設定(LAN1)】，根據實際網路環境更改網路設定。



步驟 6：儲存成功後將 WISE-5231M-4GE/4GC 連接至實際網路環境。



# 4

## 前往 WISE-5231M-4GE/4GC 網頁進行邏輯規則設定

使用者透過 WISE-5231M-4GE/4GC 所提供的網頁，只需使用滑鼠點選設定，即可完成控制器上的 I/O 模組連接與工作邏輯的規劃。

### 步驟 1：開啟瀏覽器，填入 WISE 模組 IP 作為瀏覽器的 URL 位址

開啟電腦上的瀏覽器，輸入 WISE-5231M-4GE/4GC 的 IP 作為 URL 位址(如有重新設定 IP，請確認所輸入 IP 是否正確)。

### 步驟 2：進入 WISE-5231M-4GE/4GC 的設定頁面

進入 WISE-5231M-4GE/4GC 所提供的參數設定頁面，使用預設密碼“Admin”登入後，僅需依照首頁上的設定流程：【模組設定】→【進階功能設定】→【邏輯規則設定】→【寫入設定】，即可完成 WISE 控制器的邏輯規則編排。

The screenshot displays the 'System Parameter Setting Page' (系統參數設定頁面) of the WISE-5200 controller. The interface includes a navigation menu on the left with options like 'System Parameter Setting', 'Module Setting', 'Recorder Setting', 'Advanced Function Setting', 'Logic Rule Setting', and 'Real-time Information Display'. The main content area is divided into several sections:

- 時間設定 (Time Setting):** Includes fields for 'Date' (2015/03/09), 'Time' (15:10:44), and 'Time Synchronization' (時間校時) with a 'Function Status' (功能狀態) of 'Disabled' (停用).
- 網路設定 (Network Setting):** Shows 'LAN1' configuration with IP (192.168.100.102), Subnet Mask (255.255.255.0), Gateway (192.168.100.254), and DNS Server IP (168.95.192.1). It also lists connection ports for 'Web Server', 'Modbus TCP', and 'Modbus NetID'.
- 安全設定 (Security Setting):** Features 'Local FTP Server' (本機FTP伺服器) set to 'Enabled' (啟用) and a 'Idle Time' (閒置時間) of 60 minutes.
- COM Port Interface Setting (COM Port 介面設定):** Configures three COM ports: COM2 (Disabled), COM3 (Modbus RTU, 115200 bps), and COM4 (DCON device, 9600 bps).

### 步驟 3：設定流程中的細節，請參照 WISE-5231M-4GE/4GC 操作手冊